

SPECIFICATION

FOUNDATION
R.C.C. ISOLATED COLUMN FOOTINGS SUITABLY REINFORCED WITH C.M. 1:3 P.C.C. 1:4:8 & SAND FILLING.

BRICK WORK
BRICK WORK IN C.M. 1:3 IN BASEMENT & 1:5 SUPER STRUCTURE.

ROOFING
R.C.C. SLAB 150MM THK 1:2:4 WITH 0.7% REINFORCEMENT.

WATER PROOFING
SLOPE CONCRETE WITH BRICK TELL IN LINE AND ONE COURSE OF FLAT TILES SET IN C.M. 1:3 MIXED WITH CRACKER OIL & POINTED WITH CEMENT MORTAR 1:3 & RUBBED SMOOTH.

PLASTERING
WALLS & CEILING IN 1/2" THK C.M. 1:4.

FLOORING
GROUND FLOOR: MOSAIC FLOORING OVER A LAYER OF P.C.C. 1:4:8 & SAND FILLING.
UPPER FLOOR: MOSAIC FLOORING OVER R.C.C. SLAB.

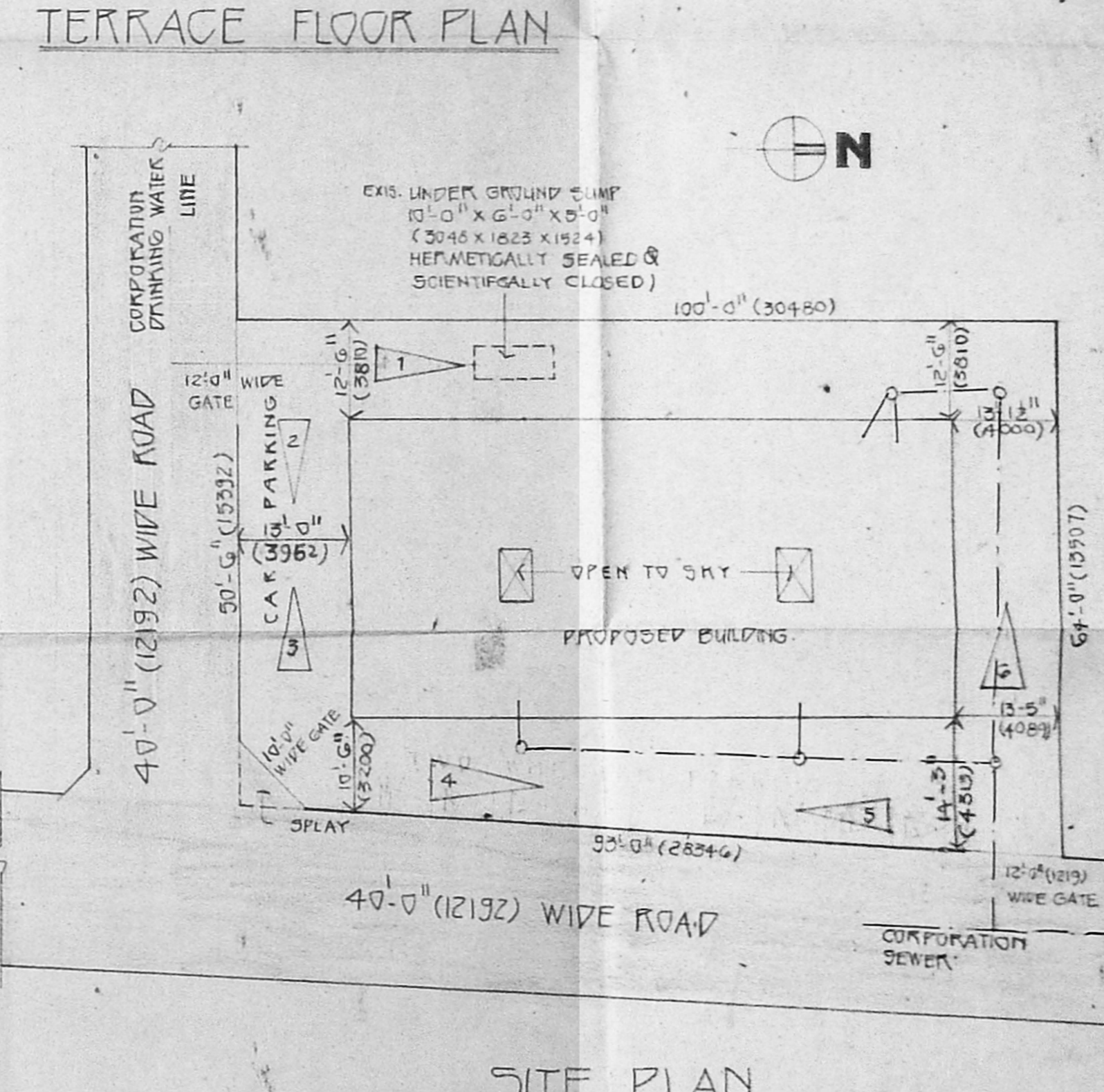
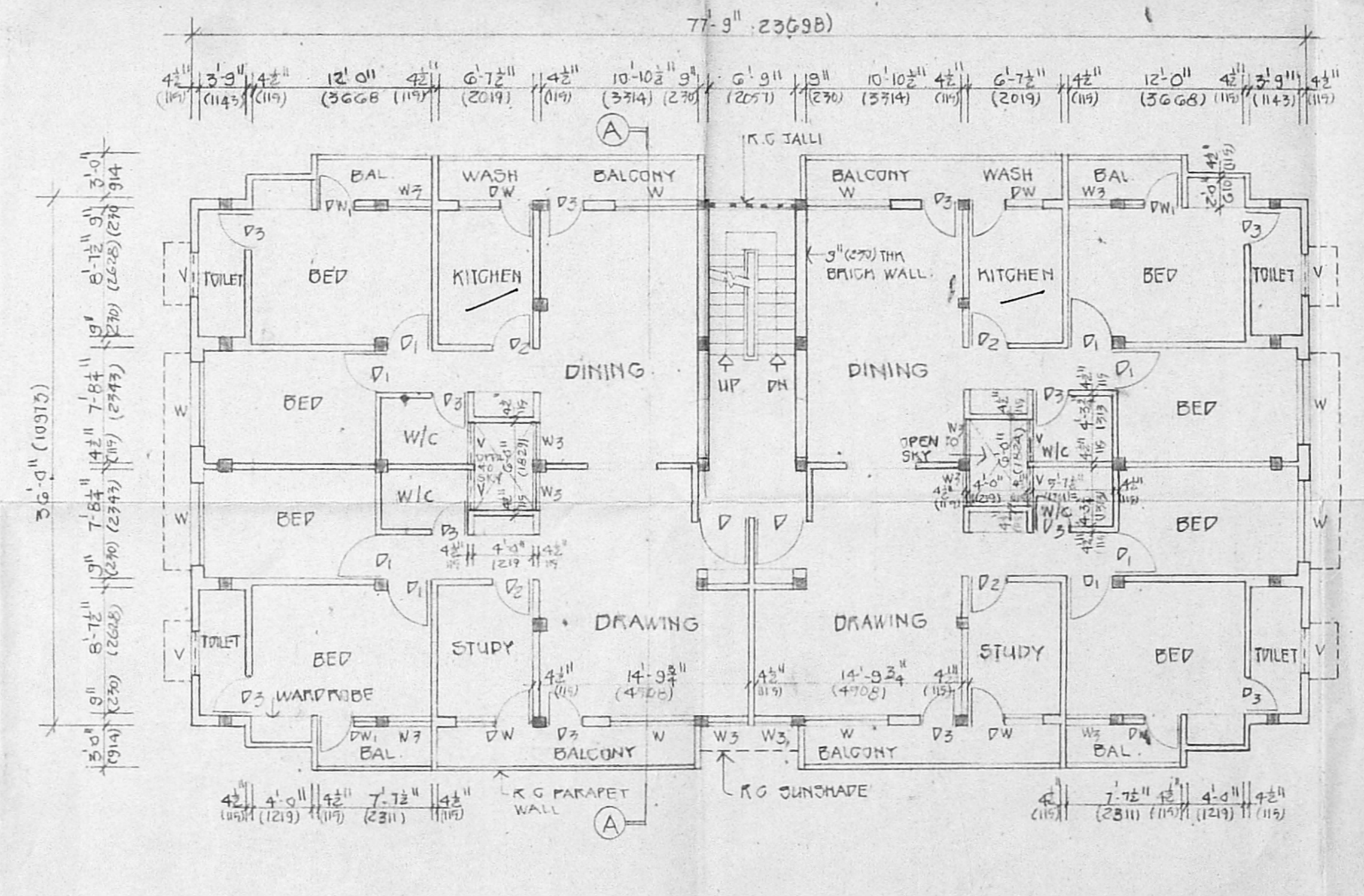
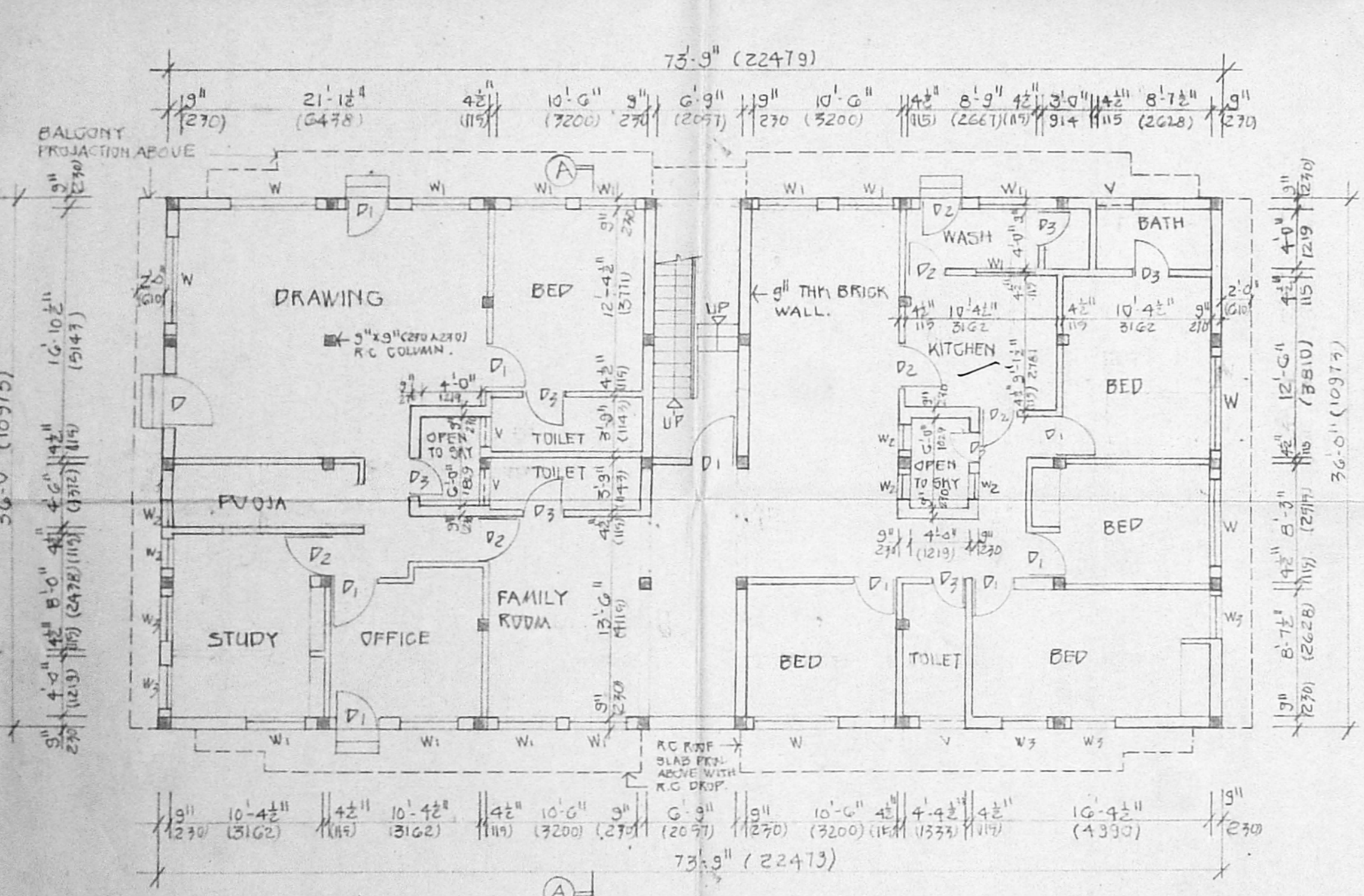
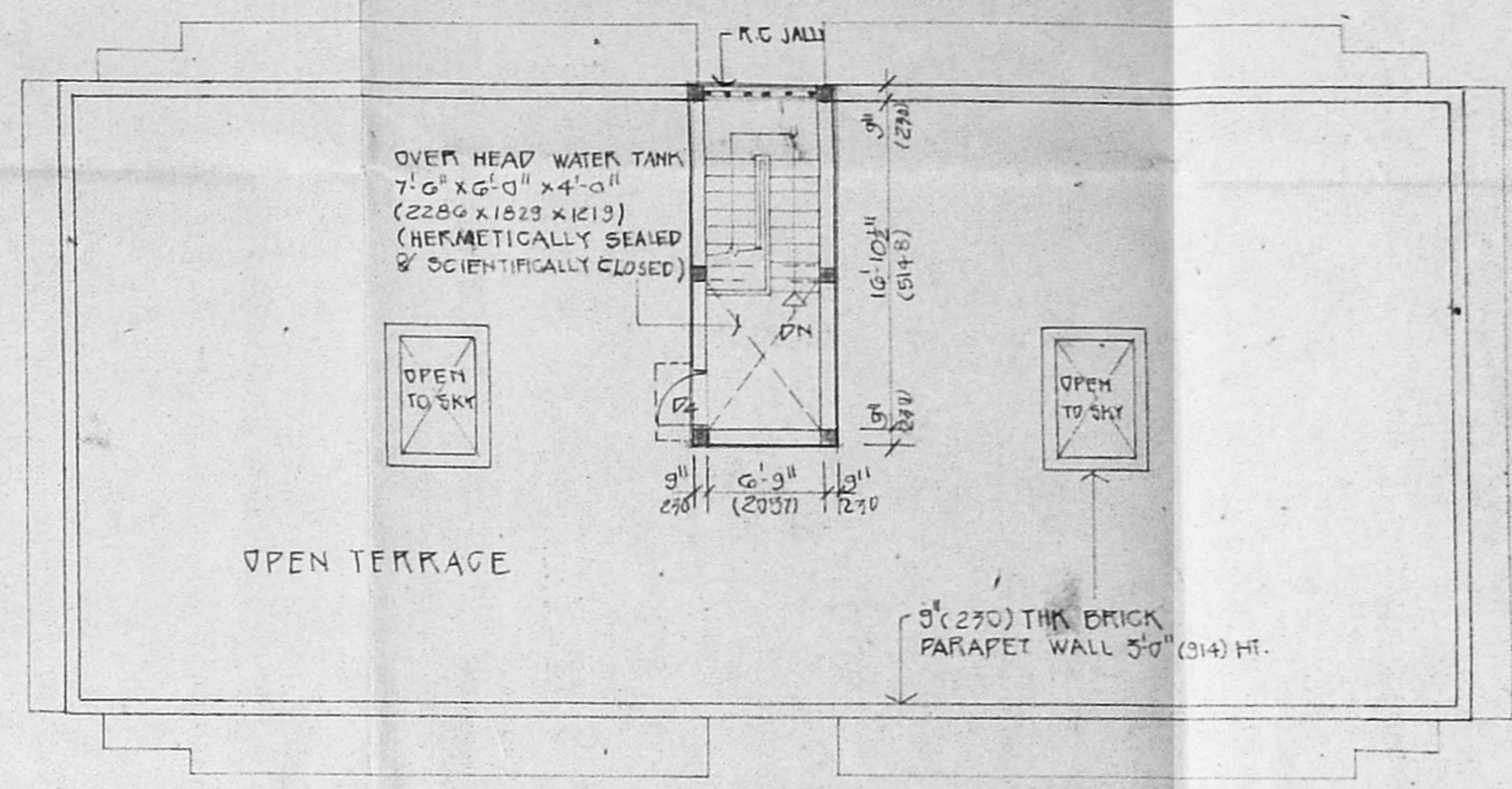
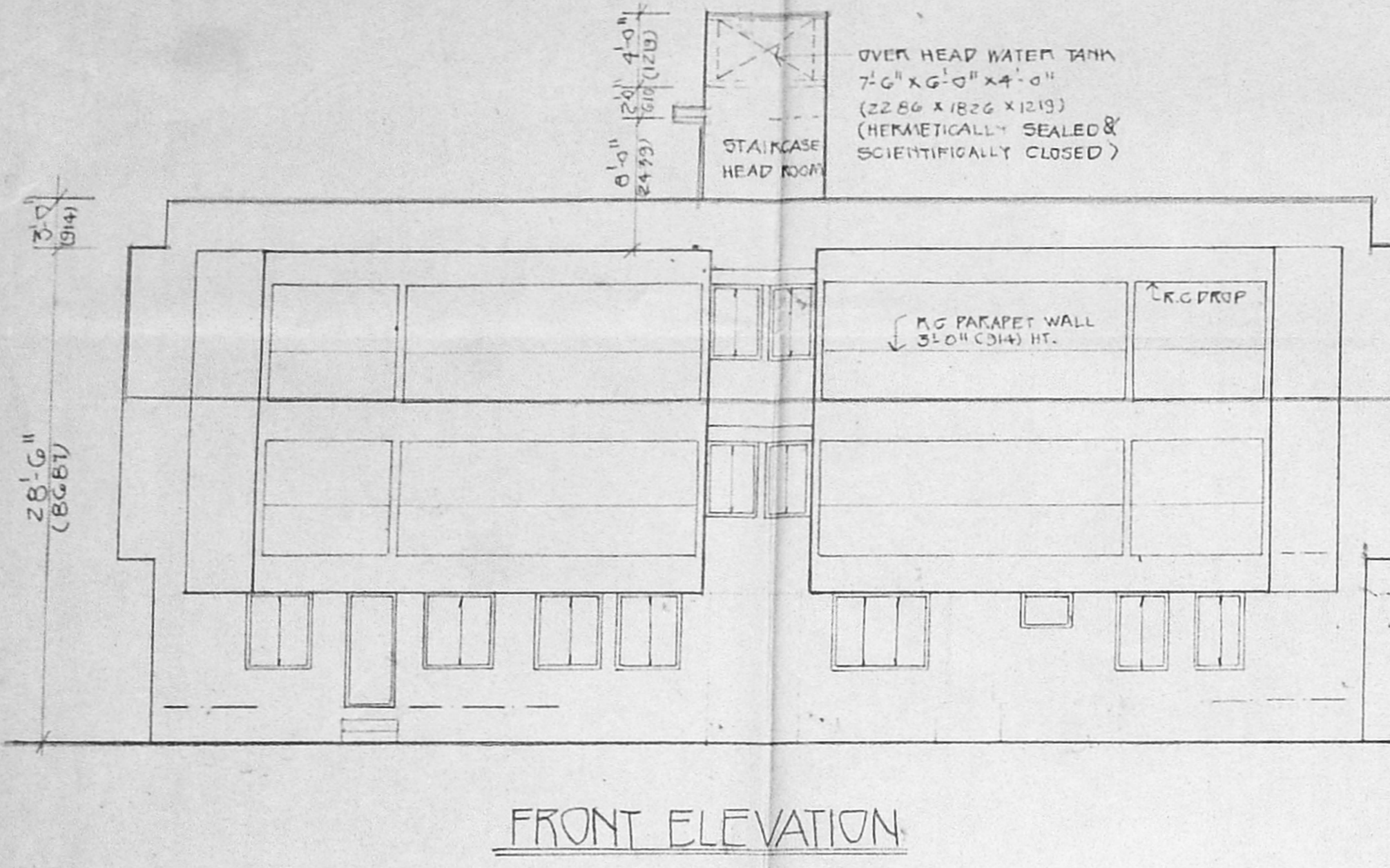
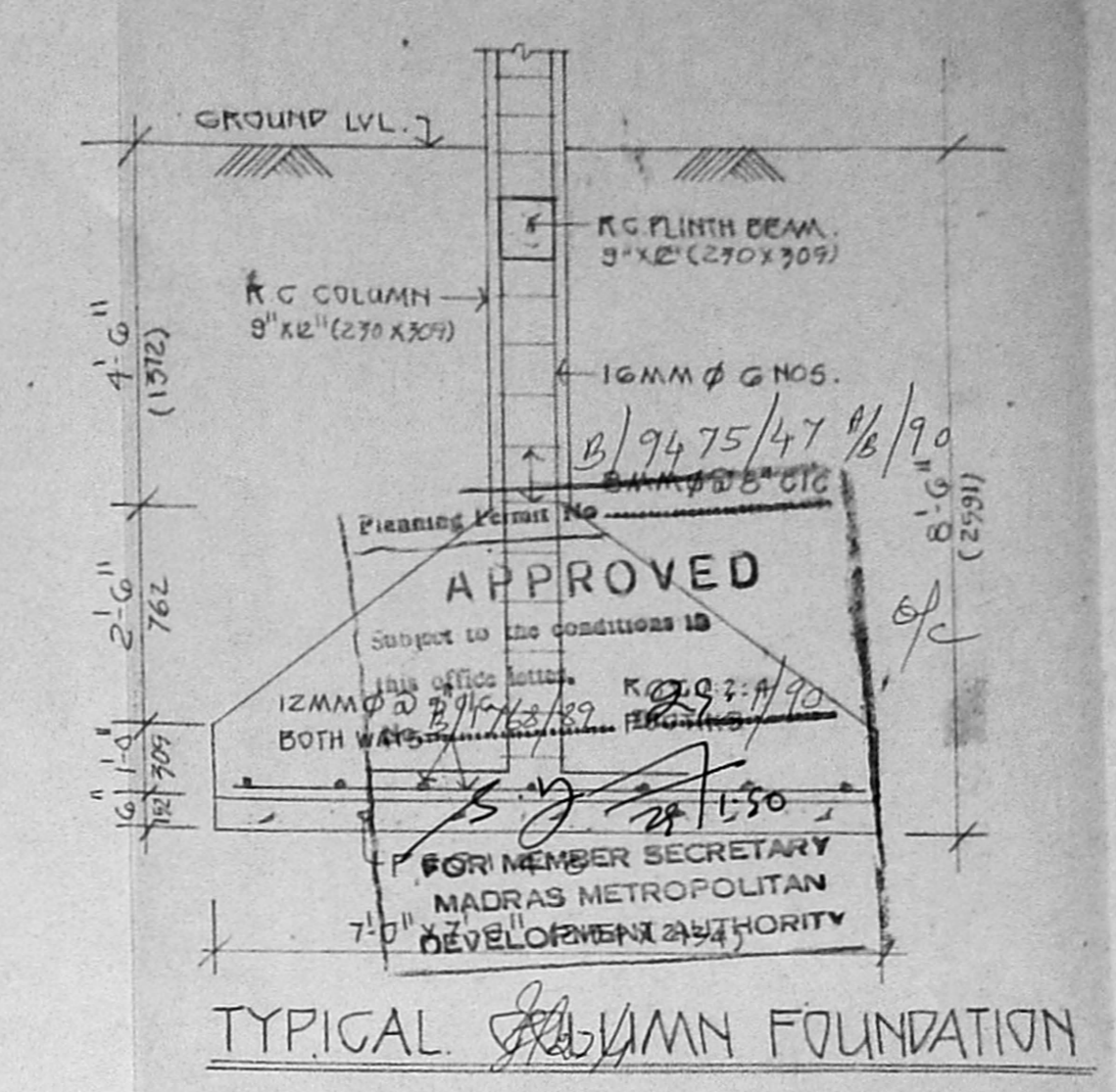
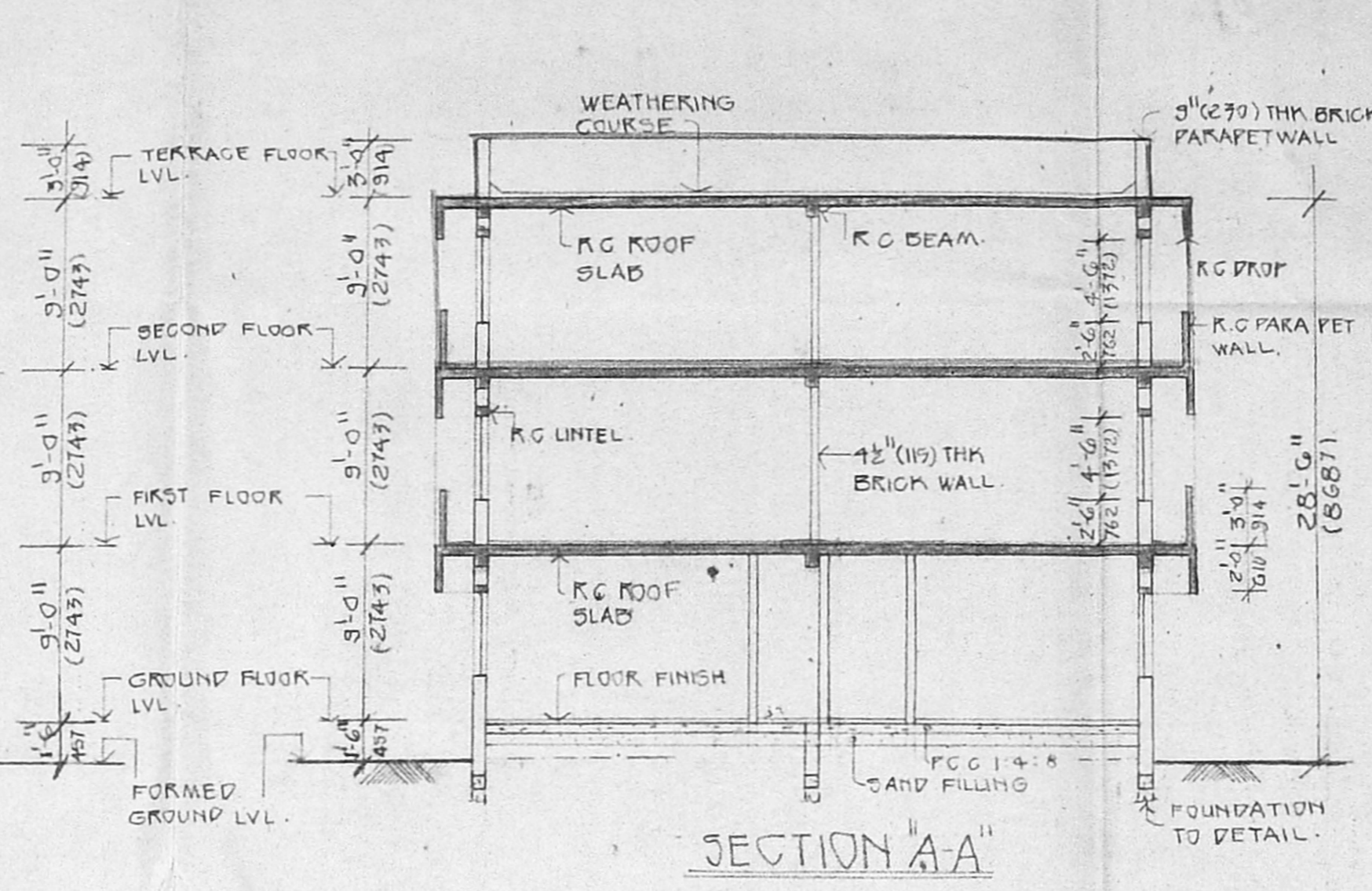
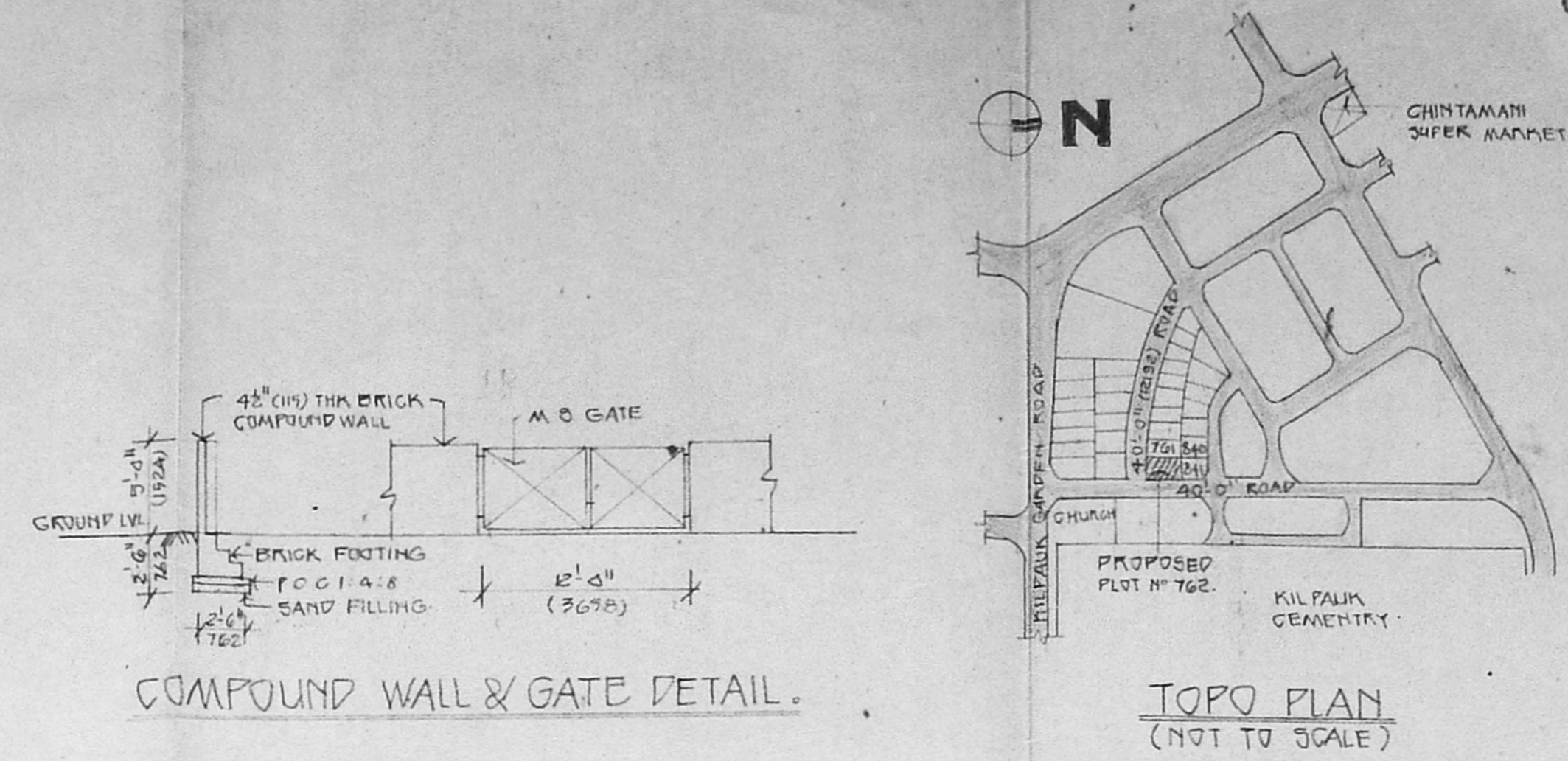
FINISHES
INTERIOR PAINTED WITH DRY DISTEMPER.
EXTERIOR PAINTED WITH CEMENT PAINT.
DOORS & WINDOWS PAINTED WITH SYNTHETIC EMULSION PAINT OVER A PRIMING COAT OF WOODEN PRIMER.

SCHEDULE OF JOINERY

D1	3'-0" x 7'-0"	(914 x 2134)	T/W FLUSH DOOR
D2	2'-6" x 7'-0"	(762 x 2134)	T/W FLUSH DOOR
D3	2'-6" x 7'-0"	(762 x 2134)	T/W FLUSH DOOR
D4	3'-0" x 7'-0"	(914 x 2134)	T/W FLUSH DOOR
D5	3'-0" x 7'-0"	(914 x 2134)	T/W FLUSH DOOR
D6	3'-0" x 7'-0"	(914 x 2134)	T/W FLUSH DOOR
D7	3'-0" x 7'-0"	(914 x 2134)	T/W FLUSH DOOR
D8	3'-0" x 7'-0"	(914 x 2134)	T/W FLUSH DOOR
D9	3'-0" x 7'-0"	(914 x 2134)	T/W FLUSH DOOR
D10	3'-0" x 7'-0"	(914 x 2134)	T/W FLUSH DOOR
D11	3'-0" x 7'-0"	(914 x 2134)	T/W FLUSH DOOR
D12	3'-0" x 7'-0"	(914 x 2134)	T/W FLUSH DOOR
D13	3'-0" x 7'-0"	(914 x 2134)	T/W FLUSH DOOR
D14	3'-0" x 7'-0"	(914 x 2134)	T/W FLUSH DOOR
D15	3'-0" x 7'-0"	(914 x 2134)	T/W FLUSH DOOR
D16	3'-0" x 7'-0"	(914 x 2134)	T/W FLUSH DOOR
D17	3'-0" x 7'-0"	(914 x 2134)	T/W FLUSH DOOR
D18	3'-0" x 7'-0"	(914 x 2134)	T/W FLUSH DOOR
D19	3'-0" x 7'-0"	(914 x 2134)	T/W FLUSH DOOR
D20	3'-0" x 7'-0"	(914 x 2134)	T/W FLUSH DOOR
D21	3'-0" x 7'-0"	(914 x 2134)	T/W FLUSH DOOR
D22	3'-0" x 7'-0"	(914 x 2134)	T/W FLUSH DOOR
D23	3'-0" x 7'-0"	(914 x 2134)	T/W FLUSH DOOR
D24	3'-0" x 7'-0"	(914 x 2134)	T/W FLUSH DOOR
D25	3'-0" x 7'-0"	(914 x 2134)	T/W FLUSH DOOR
D26	3'-0" x 7'-0"	(914 x 2134)	T/W FLUSH DOOR
D27	3'-0" x 7'-0"	(914 x 2134)	T/W FLUSH DOOR
D28	3'-0" x 7'-0"	(914 x 2134)	T/W FLUSH DOOR
D29	3'-0" x 7'-0"	(914 x 2134)	T/W FLUSH DOOR
D30	3'-0" x 7'-0"	(914 x 2134)	T/W FLUSH DOOR
D31	3'-0" x 7'-0"	(914 x 2134)	T/W FLUSH DOOR
D32	3'-0" x 7'-0"	(914 x 2134)	T/W FLUSH DOOR
D33	3'-0" x 7'-0"	(914 x 2134)	T/W FLUSH DOOR
D34	3'-0" x 7'-0"	(914 x 2134)	T/W FLUSH DOOR
D35	3'-0" x 7'-0"	(914 x 2134)	T/W FLUSH DOOR
D36	3'-0" x 7'-0"	(914 x 2134)	T/W FLUSH DOOR
D37	3'-0" x 7'-0"	(914 x 2134)	T/W FLUSH DOOR
D38	3'-0" x 7'-0"	(914 x 2134)	T/W FLUSH DOOR
D39	3'-0" x 7'-0"	(914 x 2134)	T/W FLUSH DOOR
D40	3'-0" x 7'-0"	(914 x 2134)	T/W FLUSH DOOR
D41	3'-0" x 7'-0"	(914 x 2134)	T/W FLUSH DOOR
D42	3'-0" x 7'-0"	(914 x 2134)	T/W FLUSH DOOR
D43	3'-0" x 7'-0"	(914 x 2134)	T/W FLUSH DOOR
D44	3'-0" x 7'-0"	(914 x 2134)	T/W FLUSH DOOR
D45	3'-0" x 7'-0"	(914 x 2134)	T/W FLUSH DOOR
D46	3'-0" x 7'-0"	(914 x 2134)	T/W FLUSH DOOR
D47	3'-0" x 7'-0"	(914 x 2134)	T/W FLUSH DOOR
D48	3'-0" x 7'-0"	(914 x 2134)	T/W FLUSH DOOR
D49	3'-0" x 7'-0"	(914 x 2134)	T/W FLUSH DOOR
D50	3'-0" x 7'-0"	(914 x 2134)	T/W FLUSH DOOR
D51	3'-0" x 7'-0"	(914 x 2134)	T/W FLUSH DOOR
D52	3'-0" x 7'-0"	(914 x 2134)	T/W FLUSH DOOR
D53	3'-0" x 7'-0"	(914 x 2134)	T/W FLUSH DOOR
D54	3'-0" x 7'-0"	(914 x 2134)	T/W FLUSH DOOR
D55	3'-0" x 7'-0"	(914 x 2134)	T/W FLUSH DOOR
D56	3'-0" x 7'-0"	(914 x 2134)	T/W FLUSH DOOR
D57	3'-0" x 7'-0"	(914 x 2134)	T/W FLUSH DOOR
D58	3'-0" x 7'-0"	(914 x 2134)	T/W FLUSH DOOR
D59	3'-0" x 7'-0"	(914 x 2134)	T/W FLUSH DOOR
D60	3'-0" x 7'-0"	(914 x 2134)	T/W FLUSH DOOR
D61	3'-0" x 7'-0"	(914 x 2134)	T/W FLUSH DOOR
D62	3'-0" x 7'-0"	(914 x 2134)	T/W FLUSH DOOR
D63	3'-0" x 7'-0"	(914 x 2134)	T/W FLUSH DOOR
D64	3'-0" x 7'-0"	(914 x 2134)	T/W FLUSH DOOR
D65	3'-0" x 7'-0"	(914 x 2134)	T/W FLUSH DOOR
D66	3'-0" x 7'-0"	(914 x 2134)	T/W FLUSH DOOR
D67	3'-0" x 7'-0"	(914 x 2134)	T/W FLUSH DOOR
D68	3'-0" x 7'-0"	(914 x 2134)	T/W FLUSH DOOR
D69	3'-0" x 7'-0"	(914 x 2134)	T/W FLUSH DOOR
D70	3'-0" x 7'-0"	(914 x 2134)	T/W FLUSH DOOR
D71	3'-0" x 7'-0"	(914 x 2134)	T/W FLUSH DOOR
D72	3'-0" x 7'-0"	(914 x 2134)	T/W FLUSH DOOR
D73	3'-0" x 7'-0"	(914 x 2134)	T/W FLUSH DOOR
D74	3'-0" x 7'-0"	(914 x 2134)	T/W FLUSH DOOR
D75	3'-0" x 7'-0"	(914 x 2134)	T/W FLUSH DOOR
D76	3'-0" x 7'-0"	(914 x 2134)	T/W FLUSH DOOR
D77	3'-0" x 7'-0"	(914 x 2134)	T/W FLUSH DOOR
D78	3'-0" x 7'-0"	(914 x 2134)	T/W FLUSH DOOR
D79	3'-0" x 7'-0"	(914 x 2134)	T/W FLUSH DOOR
D80	3'-0" x 7'-0"	(914 x 2134)	T/W FLUSH DOOR
D81	3'-0" x 7'-0"	(914 x 2134)	T/W FLUSH DOOR
D82	3'-0" x 7'-0"	(914 x 2134)	T/W FLUSH DOOR
D83	3'-0" x 7'-0"	(914 x 2134)	T/W FLUSH DOOR
D84	3'-0" x 7'-0"	(914 x 2134)	T/W FLUSH DOOR
D85	3'-0" x 7'-0"	(914 x 2134)	T/W FLUSH DOOR
D86	3'-0" x 7'-0"	(914 x 2134)	T/W FLUSH DOOR
D87	3'-0" x 7'-0"	(914 x 2134)	T/W FLUSH DOOR
D88	3'-0" x 7'-0"	(914 x 2134)	T/W FLUSH DOOR
D89	3'-0" x 7'-0"	(914 x 2134)	T/W FLUSH DOOR
D90	3'-0" x 7'-0"	(914 x 2134)	T/W FLUSH DOOR
D91	3'-0" x 7'-0"	(914 x 2134)	T/W FLUSH DOOR
D92	3'-0" x 7'-0"	(914 x 2134)	T/W FLUSH DOOR
D93	3'-0" x 7'-0"	(914 x 2134)	T/W FLUSH DOOR
D94	3'-0" x 7'-0"	(914 x 2134)	T/W FLUSH DOOR
D95	3'-0" x 7'-0"	(914 x 2134)	T/W FLUSH DOOR
D96	3'-0" x 7'-0"	(914 x 2134)	T/W FLUSH DOOR
D97	3'-0" x 7'-0"	(914 x 2134)	T/W FLUSH DOOR
D98	3'-0" x 7'-0"	(914 x 2134)	T/W FLUSH DOOR
D99	3'-0" x 7'-0"	(914 x 2134)	T/W FLUSH DOOR
D100	3'-0" x 7'-0"	(914 x 2134)	T/W FLUSH DOOR

COLOR REFERENCE

- PROPOSED
- EXISTING
- ROAD
- PLOT OUT LINE
- DRINKING WATER LINE
- DRAINAGE LINE



OWNER
B. Ananakanda

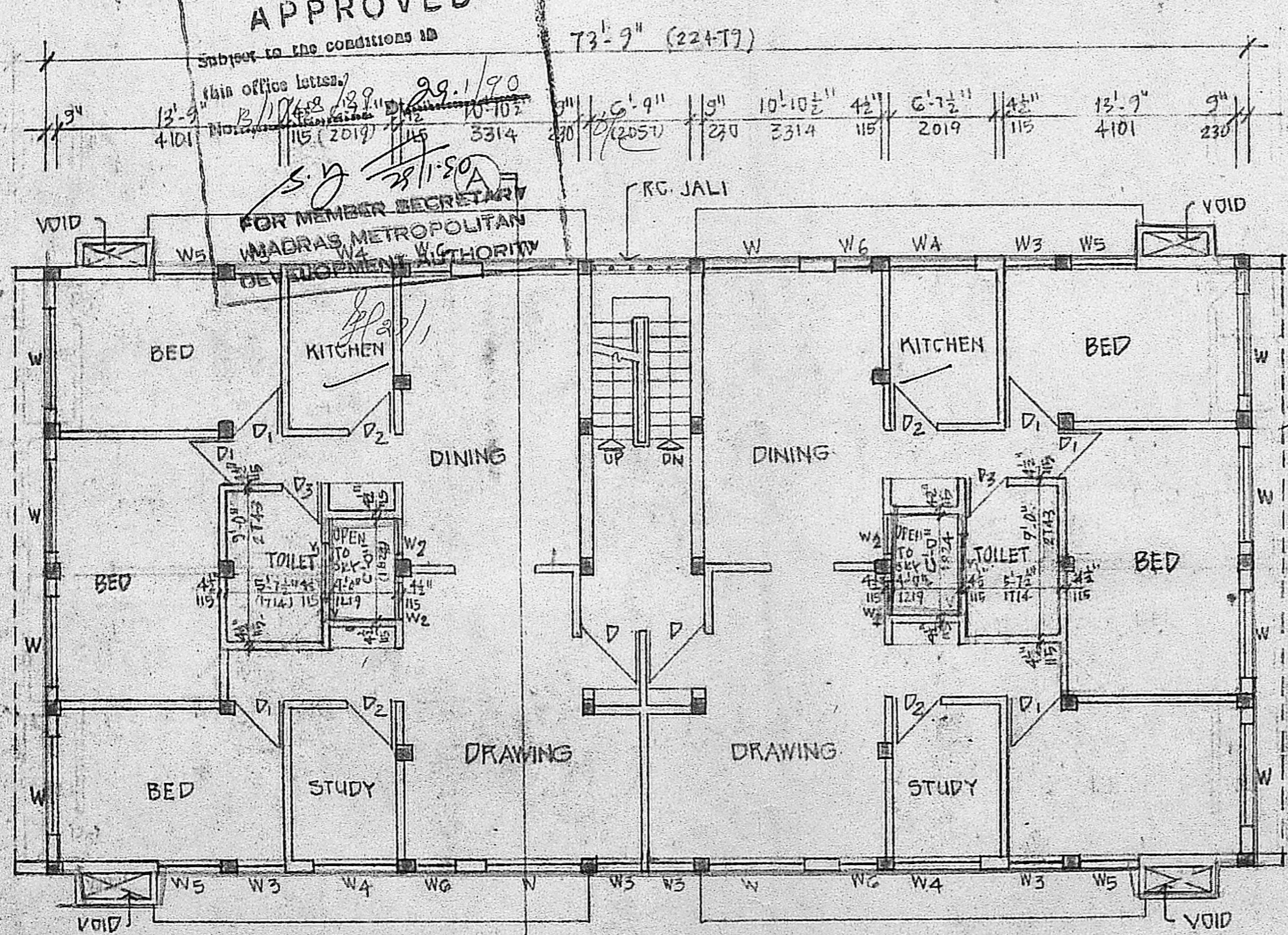
LICENSED SURVEYOR
SATNAM SINGH B. ARCH. AND ARCHITECT & INTERIOR DESIGNER
146 PURASAVAKAM HIGH ROAD, KOLLY, MADRAS - 600 010

PROPOSED RESIDENTIAL BUILDING IN PLOT NO. 762, ARINGNAR ANNA NAGAR, MADRAS. S. NO. 5/3 PART OF AMINIKARAI, DIV. NO. 73. ADDITION TO SANCTIONED B.A. NO. 336/86. DT. 2-6-86

CORPORATION DRAWING.

SCALE 1/8" = 1'-0" (1:100)	DATE
DRAWN	CHECKED
ARCHITECT	JOB NO. 160
SATNAM SINGH B. ARCH. AND ARCHITECT & INTERIOR DESIGNER 146 PURASAVAKAM HIGH ROAD, KOLLY, MADRAS - 600 010	DRG. NO.

B/9475/47 B/B/90
 Planning Permit No.
APPROVED
 Subject to the conditions in
 this office letter. 29.1/90
 No. B/1048/89
 15 (2019) 115 3314 230
 10/2051 270 2314 115 2019 115 4101 230



73'-9" (22477)
 7'-0" 13'-9" 4'-0" 6'-7 1/2" 4'-0" 14'-9 3/4" 4'-0" 6'-7 1/2" 4'-0" 13'-9" 7'-0"
 230 4101 115 2019 115 4508 115 2019 115 4101 230

SECOND FLOOR PLAN

COLOUR REFERENCE

- PROPOSED
- EXISTING
- ROAD
- PLOT OUT LINE
- DRINKING WATER LINE NO.
- DRAINAGE LINE C.No. B/1062/89

OWNER: SCHEMATA PART I & II
 J. J. Anandakund
 29/11

LICENSED SURVEYOR: *Satnam Singh*
SATNAM SINGH B.Arch., A.I.D.
 architect & interior designer
 146 Purasawalkam High Road
 Kellys, Madras - 600 010
 LICENSED SURVEYOR CLASS-I No. RA - 31

PROPOSED RESIDENTIAL BUILDING
 IN PLOT NO 762 ARINGNAR ANNA
 NAGAR, MADRAS, S.No 5/3 PART
 OF AMINJIKARAI, DIV. NO 73
 ADDITION TO SANCTIONED -
 B.A. NO 336/86 DT. 2-6-86

CORPORATION DRAWING

SCALE 1" = 8'-0" (1:192)	DATE
DRAWN	CHECKED
ARCHITECT:	
SATNAM SINGH B.Arch., A.I.D. ARCHITECT & INTERIOR DESIGNER 146 PURASAWALKAM HIGH ROAD, KELLYS, MADRAS - 600 010	
JOB NO 160	DRG NO